

France, UK

MuseumPass.com 2008/2009

& Italy



PARIS ■ VERSAILLES ■ CHARTRES ■ RIVIERA ■ GIVERNY ■ NORMANDY ■ CHAMPAGNE ■ PROVENCE ■ LOIRE VALLEY



The Paris experience

THE PARIS EXPERIENCE

STARTING AT US \$599

ALL THE BEST OF PARIS, AT YOUR OWN PACE

VISIT PARIS WORLD FAMOUS MUSEUMS, BEAUTIFUL MONUMENTS, GOURMET RESTAURANTS AND SHOPPING PARADISE. DISCOVER THE ROYAL PALACE OF VERSAILLES, ALL THIS AND MORE – AT YOUR OWN LEISURE. DON'T MISS IT.

THIS VERY COMPREHENSIVE PACKAGE INCLUDES:

- 5 NIGHT ACCOMMODATION IN A CHARMING HOTEL SELECTED FOR BOTH ITS LOCATION AND ATMOSPHERE. ALL ROOMS HAVE PRIVATE BATH.
- ROUND-TRIP TRANSFER BY CHAUFFEURED CARD BETWEEN AIRPORT AND HOTEL.
- DAILY BREAKFAST.
- A HALF DAY CITY TOUR OF PARIS.
- 4 DAY PASS PROVIDING FREE ACCESS (AND NO WAITING IN LINES) TO 70 MAJOR MONUMENTS AND MUSEUMS OF PARIS.
- 5 DAY PASS ALLOWING UNLIMITED TRAVEL BY SUBWAY AND BUS THROUGHOUT PARIS. (NO WAITING ON LINES)
- A 10 % DISCOUNT CARDS TO THE MOST FAMOUS GALERIES LAFAYETTE DEPARTMENT STORES.
- AN INVITATION TO A FASHION SHOW.

PRICES ARE PER PERSON. AIR FARES ARE NOT INCLUDED BUT CAN BE ARRANGE WITH OUR LOCAL AGENT AT

CALL OUR FRIENDLY STAFF AT 1 800 283 7262 OR
CUSTOMERSVC@MUSEUMPASS.COM



The romance of Paris

THE ROMANCE OF PARIS

STARTING AT US \$699

PARIS IS THE PERFECT ESCAPE FOR ROMANCE AND CULTURE. THIS WINTER AND SPRING, MUSEUMS ABOUND WITH GREAT EXHIBITS SUCH AS GALLERY-OWNER, EDITOR PHOTO-GRAPHER AND COLLECTOR, STIEGLITZ WHO INTRODUCED AMERICANS TO CEZANNE, RODIN, PICASSO, MATISSE AND BRANCUSI. STIEGLITZ CONTRIBUTED TO THE REVIVAL AMERICAN ART BY PROMOTING THE WORK OF AMERICAN MODERNIST PAINTERS AND PHOTOGRAPHERS, FROM HARTLEY TO GEORGIA O'KEEFFE. THE MUSEE D'ORSAY DEVOTES THIS FIRST EXHIBITION IN FRANCE TO HIM, GIVING US THE OPPORTUNITY TO GET TO KNOW THIS KEY FIGURE WITH HIS INSATIABLE CURIOSITY.; ALSO VISIBLE FOR THE FIRST TIME FOR THE OCCASION OF THE BICENTENNIAL OF NAPOLEON'S CORONATION, THIS EXCEPTIONAL PRIVATE COLLECTION INVITES VISITORS TO SHARE THE PRIVATE LIFE OF THE EMPEROR THROUGH UNSEEN OBJECTS FROM HIS LIFE AND A COLLECTION OF STUNNING DECORATIVE ARTS.



PARIS IS A MAGIC COMBINATION OF ART, HISTORY, ARCHITECTURE, STYLE, GREAT FOOD AND WINE, AND AN IRREPRESSIBLE JOIE DE VIVRE.

STARTING AT US\$699* PER PERSON, THIS FRENCHEXPERIENCE.COM
SPECIAL VACATION PACKAGE FEATURES A:

STAY 3 NIGHTS = PAY 2 NIGHTS



THE ROMANCE OF PARIS PACKAGES OFFER VACATIONS FOR ALL TASTES AND BUDGETS, IN LUXURY, BOUTIQUE, TRADITIONAL OR CONTEMPORARY HOTELS.

YOUR EVENING BEGINS IN STYLE WITH AN ILLUMINATIONS TOUR OF PARIS BY THE SPECTACULAR FLOODLIT MONUMENTS FOLLOWED BY

THIS PACKAGE ALSO INCLUDES :

- 3 NIGHTS ACCOMMODATIONS AT THE 3 STAR AVIATIC HOTEL ON THE LEFT BANK OR SIMILAR
- DAILY BREAKFAST
- 2 DAY PARIS UNLIMITED MUSEUM & MONUMENT PASS
- 3 DAY PASS ALLOWING UNLIMITED TRAVEL BY SUBWAY AND BUS THROUGHOUT PARIS. (NO WAITING ON LINES)
- DINNER AT THE EIFFEL TOWER & CRUISE
- ROUND TRIP AIRPORT TRANSFERS.
- 10 % DISCOUNT CARDS TO THE MOST FAMOUS GALERIES LAFAYETTE DEPARTMENT STORES

*ALL PRICES ARE BASED ON DOUBLE OCCUPANCY.
AIRFARE NOT INCLUDE – AVAILABLE UPON REQUEST.

CALL OUR FRIENDLY STAFF AT 1 800 283 7262 OR
CUSTOMERSVC@MUSEUMPASS.COM



French Riviera

FRENCH RIVIERA MUSEUM PASS

DESCRIPTION	PRICE
FRENCH RIVIERA MUSEUM PASS – 1 DAY (ITEM E004)	\$19
FRENCH RIVIERA MUSEUM PASS – 3 DAYS (ITEM E005)	\$29
FRENCH RIVIERA MUSEUM PASS – 7 DAYS (ITEM E005)	\$39

THE FRENCH RIVIERA MUSEUM PASS OFFERS UNLIMITED FREE PRIORITY ACCESS TO MORE THAN 65 MUSEUMS, MONUMENTS AND GARDENS ON THE RIVIERA CÔTE D'AZUR INCLUDING THE PICASSO, Renoir, CHAGALL & MATISSE MUSEUMS AND MORE.

THIS CARD CAN BE USED FOR 1 DAY, 3 CONSECUTIVE DAYS OR 7 DAYS WITHIN A PERIOD OF 15 CONSECUTIVE DAYS. MOST OF THE MUSEUMS ARE FREE FOR CHILDREN UNDER 7 YEARS OLD. COMES WITH A LIST OF ALL VENUES WITH ADDRESSES, PHONE AND HOURS OF OPERATIONS.

RIVIERA 22 DAYS/21 NIGHTS GOLFE JUAN

US \$899

PRICE PER PERSON BASED ON A DOUBLE OCCUPANCY

SITUATED IN THE HEART OF THE COTE D'AZUR BETWEEN CANNES (7 KM) AND NICE (22 KM), JUST A SHORT DRIVE FROM THE INTERNATIONAL AIRPORT. **OPEN GOLFE JUAN****** IS LOCATED IN AN OASIS OF GREENERY, ONLY 5 MINUTES AWAY FROM ITS PRIVATE BEACH, AND 10 MINUTES FROM THE CROISSETTE IN CANNES WITH ITS SHOPPING AREAS.



SERVICES INCLUDED IN RENTAL PRICES

- INFORMATION DESK AT THE RECEPTION TO ASSIST AND INFORM YOU. MESSAGE AND MAIL SERVICE.
- BED LINEN AND TOWELS ON ARRIVAL. FINAL CLEANING (EXCEPT KITCHEN).
- COLOR TV WITH SATELLITE PROGRAM. MAINTENANCE SERVICE AND TECHNICAL ASSISTANCE WHEN NEEDED.
- ENTRY TO THE SWIMMING POOL. COSTS OF ENERGY (WATER, GAS, AND ELECTRICITY).
- PUBLIC AREAS ARE AT YOUR DISPOSAL FOR REST AND RECREATION: SALON, GAME ROOM, AND BAR, TERRACE, RESTAURANT (DEPENDING ON THE RESORT). LENDING OF ELECTRIC IRON.

NOTE: THE CLIENTS ARE REQUESTED TO LEAVE THE APARTMENT CLEAN AND WITH COMPLETE INVENTORY. SHOULD THE APARTMENT BE DAMAGED OR UNCLEAN, THE MANAGEMENT RESERVES THE RIGHT TO BILL EXTRA CLEANING CHARGES DURING THE CHECK-UP PRIOR TO DEPARTURE.

SERVICES NOT INCLUDED IN RENTAL PRICES

- THE DISTRIBUTION OF EXTRA BED LINEN AND TOWELS (17 EUROS PER PERSON PER EXTRA KIT TO BE PAID LOCALLY)
- TOURIST TAX: 1.10 EURO PER PERSON PER DAY TO BE PAID LOCALLY
- SECURITY DEPOSIT: 160 EUROS (REFUNDED AT THE END OF THE STAY, IF NO DAMAGE HAS BEEN CAUSED TO THE APARTMENT)

OPTIONAL SERVICES TO BE PAID LOCALLY

- UNDERGROUND GARAGE: 50 EUROS PER MONTH
- APARTMENT CLEANING "A LA CARTE": 45 EUROS PER CLEANING
- LAUNDRY FACILITIES: 9 EUROS
- INDIVIDUAL SAFE RENTAL: 16 EUROS PER MONTH

PRACTICAL INFORMATION

FROM NICE AIRPORT 20 KM. MOTORWAY A8 EXIT ANTIBES. BEFORE ARRIVING DOWNTOWN ANTIBES, TAKE RN7, CANNES DIRECTION. RESIDENCE LOCATED 100 METERS AFTER THE GOLFE JUAN ROAD SIGNAL.

RIVIERA 22 DAYS/21 NIGHTS VILLA DU PARC

US \$999

PRICE PER PERSON BASED ON A DOUBLE OCCUPANCY

SITUATED IN THE HEART OF THE COTE D'AZUR BETWEEN CANNES (7 KM) AND NICE (22 KM), BETWEEN THE SKY AND THE OCEAN, **RESIDENCE VILLA DU PARC****** IS

A SUPERB RESIDENCE APARTMENT BUILDING LIKE A SUN DRENCHED ROCK, FACING THE BLUE MEDITERRANEAN SEA. EXTRA LARGE BALCONIES HIGH IN THE AZURE SKY ARE INVITING YOU TO A DOLCE FARNIENTE IN YOUR PRIVATE APARTMENT. THE SANDY BEACHES ARE ONLY 100 METERS AWAY, OVER A CHARMING PEDESTRIAN WALK.

SERVICES INCLUDED IN RENTAL PRICES

- INFORMATION DESK AT THE RECEPTION TO ASSIST AND TO INFORM YOU. MESSAGE AND MAIL SERVICE.
- BED LINEN AND TOWELS ON ARRIVAL. FINAL CLEANING (EXCEPT KITCHEN).
- COLOR TV WITH SATELLITE PROGRAM. MAINTENANCE SERVICE AND TECHNICAL ASSISTANCE WHEN NEEDED.
- ENTRY TO THE SWIMMING POOL. ENERGY COSTS (WATER, GAS, AND ELECTRICITY).
- PUBLIC AREAS ARE AT YOUR DISPOSAL FOR REST AND RECREATION: SALON, GAME ROOM, AND BAR, TERRACE, RESTAURANT (DEPENDING ON THE RESORT). LENDING OF ELECTRIC IRON.

NOTE: THE CLIENTS ARE REQUESTED TO LEAVE THE APARTMENT CLEAN AND WITH COMPLETE INVENTORY. SHOULD THE APARTMENT BE DAMAGED OR UNCLEAN, THE MANAGEMENT RESERVES THE RIGHT TO BILL EXTRA CLEANING CHARGES DURING THE CHECK-UP PRIOR TO DEPARTURE.

SERVICES NOT INCLUDED IN RENTAL PRICES

- THE DISTRIBUTION OF EXTRA BED LINEN AND TOWELS: (17 EUROS PER PERSON PER EXTRA KIT TO BE PAID LOCALLY)
- TOURIST TAX: 1.10 EUROS PER PERSON PER DAY TO BE PAID LOCALLY
- 160 EUROS (REFUNDED AT THE END OF THE STAY, IF NO DAMAGE HAS BEEN CAUSED TO THE APARTMENT)

OPTIONAL SERVICES TO BE PAID LOCALLY

- UNDERGROUND GARAGE: 50 EUROS PER MONTH
- APARTMENT CLEANING "A LA CARTE": 45 EUROS PER CLEANING
- LAUNDRY FACILITIES: 9 EUROS
- INDIVIDUAL SAFE RENTAL: 16 EUROS PER MONTH

PRACTICAL INFORMATION

FROM NICE AIRPORT 20 KM. MOTORWAY A8 EXIT ANTIBES. BEFORE ARRIVING DOWNTOWN ANTIBES, TAKE RN7, CANNES DIRECTION. RESIDENCE LOCATED 100 METERS AFTER THE GOLFE JUAN ROAD SIGNAL.

LOCAL BUS FROM NICE AIRPORT.

Passes

LOUVRE & DELACROIX MUSEUM PASS & METRO COMBO

US \$19



THIS ALL-IN-ONE OFFERS PRIORITY ACCESS TO ALL PERMANENT COLLECTIONS AT THE LOUVRE MUSEUM PLUS ADMISSION TO THE DELACROIX MUSEUM, LOCATED IN EUGENE DELACROIX'S HOME. COMBINED WITH TWO SINGLE TICKETS FOR THE METRO OR BUS SYSTEM, THE HISTORY OF ART IS AT YOUR FINGERTIPS

DURATION: ONE-DAY PASS

AVAILABLE: WED.-MON. (PLEASE NOTE: THE LOUVRE MUSEUM AND THE DELACROIX MUSEUM ARE CLOSED ON TUES., PLUS JAN. 01, MAY 01, NOV. 01, AND CHRISTMAS DAY)

OPERATING HOURS

- THE LOUVRE MUSEUM: 9 AM-6 PM, THURS.-SUN.; 9 AM-9:45 PM, MON. AND WED.
- THE DELACROIX MUSEUM: 9:30 AM-5 PM

INCLUSIONS

- ONE-DAY PASS FOR THE THE LOUVRE MUSEUM AND THE DELACROIX MUSEUM
- TWO ONE-WAY TICKETS VALID FOR THE METRO AND BUS SYSTEM

ADVANTAGES

- **LAST MINUTE SHOPPING:** YOU MAY NOT HAVE THE TIME TO RECEIVE THE ACTUAL PASSES VIA MAIL. PRINTING YOUR OWN VOUCHERS AND REDEEMING THEM ONCE OVER IN THE CITY THAT YOU ARE TRAVELING TO IS THE PERFECT SOLUTION.
- **SAVES ON COSTLY SHIPPING:** YOU DO NOT GET CHARGED FOR SHIPPING WHEN YOU SELECT VOUCHERS AS YOU ACTUALLY PRINT THE VOUCHERS ON YOUR HOME OR OFFICE PRINTER.
- **SAFE AND SECURE:** VOUCHERS ARE ONLY AVAILABLE FOR 1 PRODUCT PER PERSON, FOR THE DURATION TIME THAT YOU WILL BE TRAVELING (SET BY YOURSELF DURING THE ONLINE ORDER PROCESS) AND FOR THE BEARER'S NAME PRINTED ON THE VOUCHER.

NOTE: PASS IS VALID FOR ONE DAY ONLY. BOTH THE LOUVRE MUSEUM AND THE DELACROIX MUSEUM MUST BE VISITED ON THE SAME DAY. THE TWO METRO/BUS TICKETS ARE VALID FOR ANY ONE-WAY JOURNEY WITHIN ZONES 1-3. THE 10% DISCOUNT AT THE GRAND LOUVRE RESTAURANTS IS ONLY VALID UNTIL JUNE 30 2005. THIS PASS DOES NOT INCLUDE ADMISSION TO TEMPORARY EXHIBITIONS OR GUIDED VISITS. THE PASS CANNOT BE EXTENDED OR REIMBURSED FOR ANY REASON. THIS RULE APPLIES IN THE EVENT OF CLOSURE OF PARTICIPATING MUSEUMS FOR PUBLIC HOLIDAYS OR UNFORESEEN EVENTS (STRIKES, ETC.). PASSES MAY NOT BE RETURNED OR EXCHANGED. CHILDREN UNDER THE AGE OF 18 ARE ADMITTED FOR FREE TO THE MUSEUMS; METRO TICKETS FOR ANYONE UNDER THE AGE OF 18 MUST BE BOUGHT SEPARATELY.

FOR MORE INFORMATION PLEASE GO TO POLICIES-FAQ

OPEN TOUR: UNLIMITED PARIS SIGHTSEEING BUS TOUR

US \$43

UNLIMITED PARIS SIGHTSEEING PASS AT LEISURE.

4 ROUTES TO VISIT THE PARIS YOU HAVE BEEN LOOKING FOR HISTORIC, ROMANTIC, FASHIONABLE, FUN AND SHOPPER-FRIENDLY! FREE FOR UNDER 4 YRS OF AGE. STARTS AT 10AM UNTIL 6PM (8PM SUMMER MONTHS)



- HOP ON AND OFF AS OFTEN AS YOU PLEASE.
- MORE THAN 40 HOP ON - HOP OFF POINTS WITHIN PARIS.
- SEE PARIS IN YOUR OWN TIME AND AT YOUR OWN PACE.
- PASSES FOR 1 OR 2 CONSECUTIVE DAYS ARE AVAILABLE.
- FREE PERSONAL EARPHONES! COMMENTARIES IN ENGLISH AND FRENCH.
- STATE OF THE ART CONVERTIBLE DOUBLE DECKER BUS.

LOIRE VALLEY CHATEAUX PASS: CLEF DES TEMPS

US \$44

AN UNFORGETTABLE TRIP, THAT ALLOWS YOU TO REALLY GET TO KNOW ONE OF THE MOST BEAUTIFUL ASPECTS OF FRENCH CULTURE AND HERITAGE.

UPON VISITING 9 CASTLES INCLUDING AZAY LE RIDEAU, CHAMBORD, TALCY, CHATEAU DE FOUGERES, L'ABBAYE ROYALE DE FONTEFRAUD, CHATEAU D'OIRON, CHATEAUDUN, ANGERS & CHAUMONT SUR LOIRE, EACH ONE HUNDREDS OF YEARS OLD, ONE IS UNDOUBTEDLY AMAZED BY THE ARCHITECTURE OF THE BUILDINGS, BY THE BEAUTY OF THE FURNITURE, THE ARTIFACTS AND THE MANY PAINTINGS YOU SEE THERE.



PARIS MUSEUM PASS

IN PARIS

PURCHASED AS REDEEMABLE VOUCHER (NO SHIPPING REQUIRED) OR AS A PHYSICAL GENUINE PASS

DESCRIPTION PRICE

2 DAY UNLIMITED PARIS MUSEUM PASS (ITEM PMUSE2)	\$46
4 DAY UNLIMITED PARIS MUSEUM PASS (ITEM PMUSE4)	\$72
6 DAY UNLIMITED PARIS MUSEUM PASS (ITEM PMUSE6)	\$92

THE PARIS MUSEUM PASS GIVES YOU ACCESS TO OVER 60 MUSEUMS AND MONUMENTS IN AND AROUND PARIS INCLUDING THE WORLDS FAMOUS LOUVRE, MUSÉE D'ORSAY AND THE CHATEAUX DE VERSAILLES.

SAVE TIME

- AS THE PASS ALLOWS THEM TO GO STRAIGHT TO THE FRONT DOOR AND WALK STRAIGHT INTO ALL PERMANENT COLLECTIONS. NO MORE STANDING ON LINE!
- PASSES ARE AVAILABLE FROM 2, 4 OR 6 CONSECUTIVE DAYS AND ARE VALID FOR ANY NUMBER OF VISITS WITHIN THE LIST BELOW.
- THERE IS NO EXPIRATION DATE SO THE PASS CAN BE USED ANYTIME. EACH PASS COMES WITH A LIST OF ATTRACTIONS, INCLUDING TELEPHONE NUMBERS, ADDRESSES & HOURS OF OPERATION.
- VALID FOR 2, 4 OR 6 DAYS, THE PARIS MUSEUM PASS GIVES FREE AND NO WAITING ACCESS TO 60 MUSEUMS AND MONUMENTS IN PARIS AND THE SURROUNDING REGION.

ADVANTAGES

- FREE AND PRIORITY ADMISSION TO PERMANENT COLLECTIONS
- UNLIMITED VISITS
- MAY BE PURCHASED IN ADVANCE

PLEASE NOTE

THE PASS DOES NOT GIVE ADMISSION TO TEMPORARY EXHIBITIONS OR GUIDED-VISITS.

MOST MUSEUMS :

- ARE FREE FOR UNDER 18, BUT USUALLY YOU DON'T HAVE TO WAIT IN LINE WITH PASS HOLDERS PRESENT. THERE IS NO GUARANTEE HOWEVER.
- OFFER REDUCED PRICES TO YOUNG PEOPLE AGED BETWEEN 18 AND 25,
- ARE GENERALLY CLOSED ON MONDAY OR TUESDAY AND EVERY YEAR ON JAN 1ST, MAY 1ST, NOV 11TH AND DEC 25TH.

PARIS VISITE PASS & BUS NETWORK

PURCHASED AS REDEEMABLE VOUCHER (NO SHIPPING REQUIRED) OR AS A GENUINE PHYSICAL PASS (SHIPPING WILL BE REQUIRED)

DESCRIPTION PRICE

2 DAY UNLIMITED PARIS MUSEUM PASS (ITEM E-010)	\$46
4 DAY UNLIMITED PARIS MUSEUM PASS (ITEM E-011)	\$72
6 DAY UNLIMITED PARIS MUSEUM PASS (ITEM E-012)	\$92

1 DAY ADULT - ZONE 1 TO 3 - PARIS CENTER ONLY (ITEM#E-014)	\$14
2 DAY ADULT - ZONE 1 TO 3 - PARIS CENTER ONLY (ITEM#E-019)	\$23
3 DAY ADULT - ZONE 1 TO 3 - PARIS CENTER ONLY (ITEM#E-015)	\$31
5 DAY ADULT - ZONE 1 TO 3 - PARIS CENTER ONLY (ITEM#E-016)	\$44

1 DAY ADULT - ZONE 1 TO 6 - PARIS+SUBS+VERSAILLES (ITEM#E-017)	\$29
2 DAY ADULT - ZONE 1 TO 6 - PARIS+SUBS+VERSAILLES (ITEM#E-034)	\$44
3 DAY ADULT - ZONE 1 TO 6 - PARIS+SUBS+VERSAILLES (ITEM#E-029)	\$62
5 DAY ADULT - ZONE 1 TO 6 - PARIS+SUBS+VERSAILLES (ITEM#E-018)	\$75

1 DAY CHILD (4-11 YRS) - ZONE 1 TO 3 - PARIS CENTER (ITEM#E-055)	\$7
2 DAY CHILD (4-11 YRS) - ZONE 1 TO 3 - PARIS CENTER (ITEM#E-056)	\$12
3 DAY CHILD (4-11 YRS) - ZONE 1 TO 3 - PARIS CENTER (ITEM#E-051)	\$16
5 DAY CHILD (4-11 YRS) - ZONE 1 TO 3 - PARIS CENTER (ITEM#E-052)	\$22

1 DAY CHILD (4-11 YRS) - ZONE 1 TO 6 - PARIS+ (ITEM#E-057)	\$15
2 DAY CHILD (4-11 YRS) - ZONE 1 TO 6 - PARIS+ (ITEM#E-058)	\$22
3 DAY CHILD (4-11 YRS) - ZONE 1 TO 6 - PARIS+ (ITEM#E-053)	\$31
5 DAY CHILD (4-11 YRS) - ZONE 1 TO 6 - PARIS+ (ITEM#E-054)	\$38

THE PARIS VISIT PASS IS A TRAVEL CARD PASS THAT GIVES YOU UNLIMITED USE THE METRO, BUSES AS WELL AS ALL THE PUBLIC TRANSPORT SERVICES. IT IS THE BEST WAY TO GET AROUND PARIS AND ITS REGION!

THE PARIS VISIT PASS PROVIDES UNLIMITED RIDES ON THE TRANSPORT SYSTEM OF THE ÎLE-DE-FRANCE REGION INCLUDING THE SAFE AND EFFICIENT METRO, RER (REGIONAL EXPRESS TRAINS), BUS (TO SEE PARIS FROM THE WINDOW OF A PARISIEN BUS), TRAMWAY, SUBURBAN TRANSILIEN SNCF TRAINS, MONTMARTRE FUNICULAR, MONTMARTROBUS, NOCTAMBUS, OPTILE BUS SYSTEM.

AND AGAIN, NO STANDING ONLINE, NO COUNTING OUT COINS, JUST GO, ANYTIME, ANYWHERE.

PARIS VISIT IS ON SALE IN 1, 2, 3 AND 5 CONSECUTIVE DAYS, STARTING ANY DAY OF THE WEEK. PRICE ARE PER PASS, INCLUDING TAXES AND SERVICES. CHILDREN FROM 4 TO 11 YEARS OLD HALF PRICE, UNDER 4 FREE.

NOTE: THE PARIS VISIT PASS IS GOOD FROM THE FIRST DAY OF USE (NOT FROM THE



DATE OF PURCHASE OR DELIVERY) UNTIL THE LAST CONSECUTIVE DAY. BUYING PARIS VISITE IN ADVANCE SAVES TIME AND AVOIDS LAST MINUTE LINES. SELECT A PASS MATCHING THE LENGTH OF YOUR STAY AND THE PLACES YOU WANT TO VISIT:

ZONES 1-3: CENTRAL PARIS. THIS PASS ALLOWS YOU TO REACH NEARLY ANY MONUMENT SUCH AS THE LOUVRE, NOTRE DAME, AND THE IMMEDIATE SUBURBS OF LA DEFENSE AND ST. DENIS BASILIQUE, LE BOURGET. RER TRAINS WITHIN THIS ZONE ARE AVAILABLE AS WELL AS THE LIFT AT SACRE COEUR.

ZONES 1-6: ALL OF THE ABOVE REGIONS PLUS THE MAJOR SUBURBAN SITES SUCH AS VERSAILLES CASTLE, CHARLES-DE-GAULLE AND ORLY AIRPORTS, DISNEYLAND RESORT PARIS AT MARNE LA VALLEY!

SEE A METRO MAP WITH ZONES TO HELP YOU DECIDE WHICH PASS IS RIGHT FOR YOU.

SYSTEM: METRO, BUS, TRAM, MONTMARTRE FUNICULAR TO SACRE COEUR, ALL TRANSPORTATION WITHIN THE CITY LIMITS (FARE ZONE 1,2,3).

NEW: YOU CAN NOW BOOK ONLINE AT THE VERY LAST MINUTE YOUR PARIS VISIT PASS: YOU CAN PRINT YOUR OWN VOUCHER INSTEAD OF GETTING THESE PASSES BY MAIL. LOG IN TO OUR WEB SITE FOR MORE INFORMATION.

THESE VOUCHERS ARE REDEEMABLE FOR THE ACTUAL PASSES ONCE IN THE CITY THAT YOU ARE USING THE SERVICES FOR.

THE FRENCH RIVIERA MUSEUM PASS

THE FRENCH RIVIERA MUSEUM PASS:

OFFERS UNLIMITED FREE PRIORITY ACCESS TO MORE THAN 65 MUSEUMS, MONUMENTS AND GARDENS ON THE RIVIERA CÔTE D'AZUR INCLUDING THE PICASSO, RENOIR, CHAGALL & MATISSE MUSEUMS AND MORE.



THIS CARD CAN BE USED FOR 1 DAY, 3 CONSECUTIVE DAYS OR 7 DAYS WITHIN A PERIOD OF 15 CONSECUTIVE DAYS. MOST OF THE MUSEUMS ARE FREE FOR CHILDREN UNDER 7 YEARS OLD. COMES WITH A LIST OF ALL VENUES WITH ADDRESSES, PHONE AND HOURS OF OPERATIONS.

DESCRIPTION	PRICE
1 DAY UNLIMITED FRENCH RIVIERA MUSEUM PASS (ITEM E-004)	\$19
3 DAY UNLIMITED FRENCH RIVIERA MUSEUM PASS (ITEM E-005)	\$29
7 DAY UNLIMITED FRENCH RIVIERA MUSEUM PASS (ITEM E-006)	\$39

NEW!!!: YOU CAN NOW BOOK ALL OF OUR PASSES, TOURS & EXCURSIONS AT THE LAST MINUTE. SIMPLY GO TO MUSEUMPASS.COM, BOOK AND PRINT YOUR TRAVEL VOUCHER. IT WILL BE ACCEPTED AT OUR CONVENIENTLY LOCATED REDEEMING LOCATION WITHIN PARIS.

THE PARIS "À LA CARTE" 2 DAY PASS

US 60

THE PARIS "À LA CARTE"

PASS: GIVES YOU TOTAL FLEXIBILITY TO DISCOVER PARIS IN 2 CONSECUTIVE DAYS. THE NEW PASS COMBINES TWO VERY POPULAR HOP-ON HOP-OFF TOURS. L'OPEN TOUR, THE FAMOUS YELLOW OPEN TOP BUS, LETS YOU CHOOSE FROM 4 INDEPENDENT ROUTES (A TOTAL OF 50 STOPS). THE BATOBUS, THE UNIQUE RIVER-BUS, HAS 8 STOPS ALONG THE SEINE RIVER. TAKE THE L'OPEN TOUR NEARBY YOUR HOTEL, SWITCH TO THE BATOBUS, CRUISE ON THE SEINE, GO BACK ON ANOTHER L'OPEN TOUR ROUTE. MAKEUP YOUR OWN SIGHTSEEING TOUR!



THE PARIS A LA CARTE IS VALID FROM FEBRUARY UNTIL EARLY JANUARY. THE BATOBUS IS NOT IN OPERATION IN JANUARY.

ADVANTAGES

THIS COMBO OPEN TOUR - BATOBUS PASS OFFERS 5 TOURS, 58 STOPS, ACCESSING ALL THE CAPITAL'S SITES AND MUSEUMS: EIFFEL TOWER, CHAMPS-ÉLYSÉES, LOUVRE, NOTRE-DAME CATHEDRAL, MONTMARTRE ETC.

- 50 OPEN TOUR STOPS AND 8 BATOBUS STOPOVERS);
- EASE OF USE AND FLEXIBILITY;
- WITH PARIS À LA CARTE, CREATE YOUR OWN ITINERARY AND VISITS. HOP ON HOP OFF THE BUS AND BOAT IN COMPLETE FREEDOM
- HIGH QUALITY OF SERVICE AND FREQUENT DEPARTURES (SEE RESPECTIVE BROCHURES)
- EXCEPTIONAL VIEWS OVER PARIS AND THE SEINE FROM THE BATOBUS REAR TERRACES AND OPEN BUS TOPS

THE RHINE RIVER VALLEY MUSEUM PASS

US \$19

THE RHINE RIVER VALLEY MUSEUM PASS:

FREE ENTRANCE INTO 150 MUSEUMS IN FRANCE, GERMANY AND SWITZERLAND INCLUDING TEMPORARY EXHIBITIONS (SEE MAP).

VALID FOR 4 DAYS WITHIN 1 MONTH. NON TRANSFERABLE. FREE MUSEUM ENTRANCE FOR CHILDREN 5 YEARS OF AGE AND YOUNGER.



Excursions

BRUGES (BELGIUM) BUS EXCURSION FROM PARIS

US \$210



TRAVEL ALONG THE BEAUTIFUL NORTHERN MOTORWAY TOWARDS THE BELGIAN FRONTIER.

ONE OF THE MOST PERFECTLY PRESERVED MEDIEVAL TOWNS IN EUROPE, BRUGES IS A REMARKABLE LIVING CANVAS OF OLD FLEMISH MASTERS. BEGIN WITH A GUIDED WALKING TOUR TO THE HEART OF THE CITY WITH ITS MAGNIFICENT GRAND PLACE FILLED WITH QUIET HOUSES FEATURING DECORATED FACADES, THE HALLES – COVERED MARKET – WITH ITS BELFRY, THE PLACE DU BOURG WITH THE SAINT SANG BASILICA, THE GOTHIC STYLE TOWN HALL AND THE BEGUINAGE – BEGUINE CONVENT. FREE TIME FOR LUNCH AND SHOPPING, WHERE YOU MIGHT BUY SOME HANDMADE LACE OR BELGIAN CHOCOLATES.

A CRUISE ON THE FAMOUS CANALS IS INCLUDED, DURING SUMMER SEASON ONLY (APRIL–OCTOBER).

DURATION: ALL DAY – **SPECIAL:** TOUR OPERATED IN ENGLISH, FRENCH, ITALIAN, SPANISH, AND (JAPANESE ON WEDNESDAY FROM APR. 28 TO OCT. 27)

DEPARTURE: ON WEDNESDAY, FRIDAY AND SUNDAY AT 7:15AM
DEPARTS AND RETURNS TO: CITYRAMA PARIS TERMINAL 4 PLACE DES PYRAMIDS (ACROSS STREET FROM LOUVRE MUSEUM – NEAREST METRO : PALAIS ROYAL)
RETURN TO PARIS AROUND : 9.00 PM.

NOTE: PASSPORT (WITH VISA IF NECESSARY) WILL BE REQUIRED FOR THIS VISIT. THIS TOUR IS NOT AVAILABLE ON 24 & 31 DECEMBER.

CHATEAUX COUNTRY (1 DAY – BUS EXCURSION)

US \$230

THE BEST OF THE LOIRE VALLEY DURING THE RENAISSANCE PERIOD, THE LOIRE VALLEY WAS THE FAVORITE PLACE OF THE KINGS OF FRANCE AND THEIR COURTIERES.

THEY LEFT US MANY CASTLES OF AMAZING ARCHITECTURAL ELEGANCE. ART AND HISTORY MINGLE WITH A CERTAIN SWEETNESS OF LIFE IN THIS COUNTRY CALLED "THE GARDEN OF FRANCE". THIS TOUR INCLUDES: CHAMBORD* (VISIT OF THE CASTLE), CHEVERNY (VISIT OF THE CASTLE). LUNCH. CHENONCEAU (VISIT OF THE CASTLE).

*VISIT ON YOUR OWN ON THE FIRST SUNDAY OF EACH MONTH.

SUMMER

BLOIS: GUIDED VISIT TO THE ROYAL CASTLE WHICH IS A GOOD INTRODUCTION AT THE HISTORY OF THE REGION. LUNCH ON YOUR OWN IN AMBOISE OR CHENONCEAUX. **CHENONCEAU:** GUIDED VISIT TO THIS ELEGANT RENAISSANCE CASTLE. **CHEVERNY:** GUIDED VISIT TO THE CASTLE OF CHAMBORD*.

*IN OCTOBER ON SATURDAY: VISIT TO THE CASTLE OF CHEVERNY INSTEAD OF CHAMBORD.
LUNCH ON YOUR OWN



WINTER

THIS TOUR INCLUDE: CHAMBORD* (VISIT OF THE CASTLE), CHEVERNY (VISIT OF THE CASTLE) LUNCH, CHENONCEAU (VISIT OF THE CASTLE)

*VISIT ON YOUR OWN ON THE FIRST SUNDAY OF EACH MONTH.

SUMMER: LUNCH ON YOUR OWN **WINTER:** LUNCH INCLUDED (EXCEPT DRINKS)

DURATION: 12H30
DEPARTURE : SUMMER – DAILY AT 7:15 A.M & WINTER – ON TUESDAY, THURSDAY AND SUNDAY AT 7:15AM (EXCEPT DEC. 24 AND 31. ADDITIONAL DEPARTURE: ON DEC. 26 AND 02 JAN.)
RETURN TO PARIS: 8:00 PM

LOURDES 2 DAYS WITH TGV (HIGH SPEED TRAIN)

US \$430

PRICE IS PER PERSON BASED ON DOUBLE OCCUPANCY

FERVOR AND MEDITATION (2 DAYS / 1 NIGHT)
ACCOMMODATION IN A 3 *** HOTEL WITH BATH OR SHOWER.

IN 1858, THE VIRGIN MARY APPEARED 18 TIMES, IN THE GROTTA OF MASSABIELLE, TO A POOR 14-YEAR-OLD PEASANT GIRL, NAMED BERNADETTE SOUBIROUS. TODAY LOURDES WELCOMES 5 MILLION PILGRIMS ANNUALLY FROM 150 COUNTRIES.

ON WEDNESDAY (SUMMER ONLY), TRANSFER FROM OUR OFFICE TO THE MONTPARNASSE STATION (PARIS) WITH OUR REPRESENTATIVE. BOARD THE ATLANTIC TGV TRAIN. AFTER A PLEASANT JOURNEY IN ONE OF THE WORLD'S MOST MODERN TRAINS, YOU WILL ARRIVE AT 3.42 PM AT LOURDES. YOU WILL BE WELCOMED BY A REPRESENTATIVE FROM LOURDES TOURISM AND WILL BE TRANSFERRED TO THE HOTEL LA SOLITUDE (OR SIMILAR), MODERN HOTEL LOCATED AT THE ENTRANCE OF THE SANCTUARIES. YOU WILL HAVE FREE TIME FOR THE REST OF YOUR STAY : FOR INSTANCE, DO NOT MISS THE EVENING PROCESSION.

ON THURSDAY, YOU WILL TAKE THE TGV TRAIN BACK TO PARIS AT 2.40 PM. ARRIVAL AT MONTPARNASSE STATION AT 8.15 PM.

DEPARTURE: 9:00 A.M – SUMMER – ON WEDNESDAY FROM APRIL, 7 TO OCTOBER 20.

RETURN TO PARIS: 8.30 P.M – ON THURSDAY

NOTE: THIS TOUR INCLUDE; TRANSFERS, ACCOMMODATION IN *** HOTEL, DINNER (DRINKS NOT INCLUDED)+ CONTINENTAL BREAKFAST. NO DEPARTURE AVAILABLE ON WEDNESDAY OCTOBER 6. THIS TOUR OPERATES ONLY DURING SUMMER SEASON (APRIL 7 TO SEPTEMBER 29 AND FORM OCTOBER 13 TO 20)



Shows & entertainments

CRAZY HORSE SHOW

KNOWN AS THE SEXIEST SHOW ON EARTH, THE **CRAZY HORSE** IS AN EVENING OF FUN IN TRUE PARISIAN CABARET TRADITION. MORE THAN FIVE MILLION PEOPLE HAVE WATCHED THE CRAZY HORSE SHOW IN ITS BEAUTIFULLY APPOINTED THEATRE ON THE AVENUE GEORGE V, TWO BLOCKS FROM THE ALMA SQUARE. SINCE ITS FOUNDING BY ALAIN BERNADIN, IT HAS EVOLVED THROUGH THREE DISTINCT PHASES.

THIS TOUR INCLUDE: ORCHESTRA FORMULA + A CHOICE OF 2 DRINKS PER PERSON.

DEPARTURE: 10:00 P.M ALL YEAR (EXCEPT MONDAY, SATURDAY) AND 9:00 P.M ALL YEAR MONDAY, SATURDAY EXCEPT JULY/AUGUST).



EIFFEL TOWER DINNER

DISCOVER PARIS FROM THE FIRST FLOOR OF THE EIFFEL TOWER DURING DINNER AT THE RESTAURANT "ALTITUDE 95" (SET MENU & DRINKS INCLUDED).

THEN ENJOY A ONE-HOUR CRUISE ALONG THE SEINE RIVER TO ADMIRE THE MONUMENTS AND THE BRIDGES OF THE CITY OF LIGHTS.

THIS TOUR ENDS AT 10:15 PM AT THE EIFFEL TOWER OR AT 10:30 PM ON OPERA SQUARE.

NO RETURN TO HOTELS.

DURATION: 4 HOURS

EVERY EVENING AT 6.15PM – MONDAY, TUESDAY, WEDNESDAY, THURSDAY, FRIDAY.



DINNER CRUISE AT THE BATEAUX PARISIENS (MINI BUS)

THIS TOUR IS NON AVAILABLE ON 24, 25 & 31 DECEMBER, 14 FEBRUARY AND 14 JULY. A CRUISE ON THE SEINE RIVER GLIDING THROUGH THE HEART OF PARIS, ENJOYING A ROMANTIC CANDLELIGHT DINNER WITH LIVE MUSIC FROM AN ORCHESTRA (SANCERRE WHITE WINE AND BORDEAUX RED WINE).

HOTEL PICK UP AND DROP OFF

DURATION: FULL DAY AROUND 9:00 HOURS

DEPARTURE: EVERY EVENING AT 7.30PM (EXCEPT ON DEC. 24 AND 31, FEB. 14 AND JULY 14)

NOTE: A TIE AND JACKET IS REQUIRED.

DINNER DANCE AT THE LIDO (BUS)

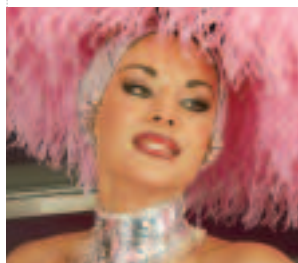
START THIS DREAM EVENING BY SAVORING A DINNER (SET MENU + 1/2 BOTTLE WINE) SPECIALLY CHOSEN AND ELABORATED BY PAUL BOCUSE. IF YOU ARE IN THE MOOD, DANCING AT THE TEMPO OF THE LIDO ORCHESTRA WILL BE SUGGESTED BEFORE ENJOYING THE WONDERFUL NEW SHOW "BONHEUR".

DURATION: 5:00 HOURS

DEPARTURE: EVERY EVENING AT 7.00PM – EXCEPT ON DECEMBER 24 AND 31, FEBRUARY 14 AND JULY 14

RETURN: TO THE CLOSE VICINITY OF YOUR HOTEL IN THE CENTRE OF PARIS.

NOTE: TIE AND JACKET REQUIRED



EURO DISNEY TOUR

DISNEYLAND PARIS – ENTRANCE TO PARK OR DISNEY STUDIOS

THE ALL-IN-ONE TICKET CONSISTS OF THE ROUND TRIP TICKETS FROM PARIS OR PARIS INNER SUBURBS TO MARNE-LA-VALLÉE CHESSY PLUS A VOUCHER TO BE EXCHANGED FOR A DAY PASS VALID FOR ONE PERSON AT EITHER OF THE TWO PARKS (DISNEYLAND® OR WALT DISNEY STUDIOS®).

YOUR 1-DAY PASSPORT ALLOWS YOU TO DISCOVER EITHER DISNEYLAND PARK OR THE MORE RECENTLY OPEN WALT DISNEY STUDIOS PARK, DEPENDING ON EACH PARK CAPACITY OF ADMISSION.

SITUATED AT A DISTANCE OF AROUND 40 KM FROM CENTRAL PARIS, BOTH PARKS PROVIDE FIRST CLASS ENTERTAINMENT FOR ADULTS AND CHILDREN ALIKE.

IN THE DISNEYLAND PARK, DISCOVER THE FUN, FANTASY AND EXCITEMENT OF THE 5 LANDS: FRONTIERLAND, ADVENTURELAND, FANTASYLAND, DISCOVERYLAND AND MAIN STREET USA.

IN THE WALT DISNEY STUDIOS PARK, DISCOVER FASCINATING WORLD OF MOVIES AND TELEVISION.

DEPARTURE FROM OUR CITYRAMA OFFICE TO DISNEYLAND PARIS IN THE COMFORT OF OUR AIR CONDITIONED MOTOR COACHES FROM THE CENTRE OF PARIS.

DEPARTURE FROM DISNEYLAND RESORT PARIS AT 6.30 PM AND RETURN TO PARIS AROUND 7.30 PM.

NOTE: CHILD FARE APPLIES FROM AGE 3 TO 11 INCLUDED.

NOTE: DURING JULY AND AUGUST, AN ADDITIONAL DAILY DEPARTURE IS ALSO AVAILABLE AT 10:00 AM (RETURN TO PARIS AROUND 10:00 PM)



Emerald tour of Italy

EMERALD TOUR

US \$1149

PRICE PER PERSON BASED ON A DOUBLE OCCUPANCY

ROME-NAPLES-POMPEII-SORRENTO-CAPRI-AMALFI-ROME (5 DAYS/4 NIGHTS) 3 AND 4* HOTELS

Day 1 ROME – NAPLES – POMPEII – SORRENTO

DEPARTURE TO NAPLES, PANORAMIC CITY TOUR INCLUDING MERGELLINA, CASTLE DELL' OVO, THE ROYAL PALACE. CONTINUE TO POMPEII. VISIT THE RUINS. LUNCH IN A TYPICAL RESTAURANT. AFTER A SHORT VISIT TO A COMEJO FACTORY, PROCEED ALONG THE COAST TO SORRENTO, A JEWEL OF THE SORRENTINE PENINSULA, FAMOUS FOR THE CULTIVATION OF ORANGES, LEMONS AND OLIVE TREES. DINNER AND OVERNIGHT. (VESUVIO HOTEL**** OR SIMILAR)

Day 2 SORRENTO – CAPRI – SORRENTO

EXCURSION TO CAPRI TO DISCOVER THE BEAUTY OF THIS WONDERFUL ISLAND. WEATHER PERMITTING VISIT THE BLUE GROTTTO. LUNCH IN A TYPICAL RESTAURANT. VISIT ANACAPRI WITH ITS MAGNIFICENT VIEWS, TIME AT LEISURE. RETURN TO SORRENTO BY FERRY. DINNER AND OVERNIGHT. (VESUVIO HOTEL**** OR SIMILAR)

Day 3 SORRENTO – AMALFI

MORNING DEPARTURE TO AMALFI VIA THE BREATHTAKING AMALFI COAST. EN-ROUTE YOU WILL SEE POSITANO AND OTHER PICTURESQUE FISHING VILLAGES. TIME AT LEISURE IN AMALFI. DINNER AND OVERNIGHT. (DEI CAVALIERI – HOTEL*** OR SIMILAR)

Day 4 AMALFI

FREE TIME TO DISCOVER THE BEAUTY OF THIS WONDERFUL COASTAL RESORT, OR TO EXPLORE THE AREA. YOU CAN TAKE A LOCAL BUS AND VISIT POSITANO OR RAVELLO, OR TAKE TIME TO RELAX AND PLUNGE INTO THE WATER OF THE MEDITERRANEAN SEA. DINNER AND OVERNIGHT. (DEI CAVALIERI HOTEL*** OR SIMILAR)



Day 5 AMALFI – SORRENTO – ROME

BREAKFAST AT THE HOTEL, MORNING AT LEISURE, EARLY AFTERNOON TRANSFER TO SORRENTO WHERE WE WILL START OUR TRIP BACK TO ROME. TRAFFIC PERMITTING, ESTIMATED TIME OF ARRIVAL APPROXIMATELY 09.00 PM.

UNBEATABLE FEATURES:

- ACCOMMODATION AT 3/4 STAR HOTELS
- CONTINENTAL BREAKFAST DAILY
- FOUR DINNERS
- TWO LUNCHES
- FULL DAY EXCURSION TO POMPEII
- FULL DAY EXCURSION TO CAPRI
- TRANSFER FROM SORRENTO TO AMALFI BY PRIVATE CAR
- TRANSFER AMALFI/SORRENTO BY PRIVATE CAR
- RETURN TO ROME BY TOUR BUS
- SERVICE CHARGES AND TAXES INCLUDED
- GROUND TRANSPORTATION BY DELUXE MOTOR COACH
- OUR GUIDE WILL ASSIST YOU DURING THE TOUR
- SIGHTSEEING TOURS AS INDICATED IN THE ITINERARY
- LOCAL GUIDES AND ENTRANCE FEES.

NOTE: TOUR AVAILABLE FROM MARCH TO NOVEMBER – DAILY DEPARTURE.

NEW!!!: YOU CAN NOW BOOK ALL OF OUR PASSES, TOURS & EXCURSIONS AT THE LAST MINUTE. SIMPLY GO TO MUSEUMPASS.COM, BOOK AND PRINT YOUR TRAVEL VOUCHER. IT WILL BE ACCEPTED AT OUR CONVENIENTLY LOCATED REDEEMING LOCATION WITHIN ROME, FLORENCE, MILAN AND VENICE.

Grand Northern tour of Italy

GRAND TOUR

US \$1,899

PRICE PER PERSON BASED ON A DOUBLE OCCUPANCY

ROME-ASSISI-SIENNA-FLORENCE-VENICE-VERONA-LAKE COMO-MILAN-SAN MARINO-PERUGIA-ROME (7 DAYS/ 6 NIGHTS) 4 STAR HOTELS.

Day 1 TUESDAY ROME – ASSISI – SIENNA – FLORENCE

EARLY MORNING DEPARTURE FOR ASSISI, THE MYSTIC TOWN OF SAINT FRANCIS STILL SURROUNDED BY ANCIENT WALLS. VISIT THE BASILICA OF SAINT FRANCIS WITH ITS EARLY RENAISSANCE MASTERPIECES BY GIOTTO AND CIMABUE. PROCEED ON TO SIENNA, THE BEAUTIFUL MEDIEVAL CITY RENOWN FOR THE PALIO. THE ON TO FLORENCE. DINNER AND OVERNIGHT. (ADRIATICO HOTEL OR SIMILAR).

Day 2 WEDNESDAY FLORENCE

BUFFET BREAKFAST. GUIDED SIGHTSEEING TOUR OF THE CRADLE OF THE RENAISSANCE. VISIT THE BEAUTIFUL PIAZZA DEL DUOMO, THE CATHEDRAL OF SANTA MARIA DEL FIORE, GIOTTO'S BELL TOWER, THE BAPTISTERY OF ST. JOHN, THE ACADEMY OF FINE ARTS GALLERY HOUSING THE "DAVID" BY MICHELANGELO, AND SANTA CROCE, THE 13TH CENTURY FRANCISCAN CHURCH WITH CIMABUE'S FAMOUS CRUCIFIX. REST OF THE DAY AT LEISURE FOR OPTIONAL SIGHTSEEING OR SHOPPING. DINNER AND OVERNIGHT AT THE HOTEL. (ADRIATICO HOTEL OR SIMILAR).



Day 3 Thursday Florence – Padua – Venice

Buffet breakfast. Departure for Venice via Padua, where you will visit the famous Cathedral of St. Anthony, guarded by Donatello's "Gattamelata". Continue on to Venice, and upon arrival enjoy a guided walking tour of this unique city. You will see the Piazza and Basilica of St. Mark, the Doge's Palace, the Bridge of Sighs and the Prisons. Then visit a glass factory to see the molding of glass. Dinner and overnight. (Principe Hotel or Amadeus Hotel or similar)

Day 4 Friday Venice

Buffet breakfast. Day at leisure for optional tour to the islands of Murano, Burano and Torcello by motor launch or for shopping. Dinner and overnight. (Principe Hotel or Amadeus Hotel or similar)

Day 5 Saturday Venice – Verona – Lake Como

Buffet breakfast. Morning departure for Verona to see the town of Romeo and Juliet. Then continue on to Como. Dinner and overnight. (Grand Hotel or similar)

Day 6 Sunday Como – Milan – San Marino

Continental breakfast. Departure to Milan and panoramic tour of the city. Proceeded on to San Marino via Bologna, one of Italy's most important art cities. Visit this fascinating medieval town with its charming squares Piazza Maggiore and Piazza del Nettuno. Proceed to San Marino, the world's smallest and oldest independent republic, founded in the year 301, as a Christian sanctuary. Dinner and overnight. (Titano or similar)

Day 7 Monday San Marino – Perugia – Rome

Continental breakfast. Departure to Perugia, the charming university town. Visit the impressive cathedral and the Palazzo dei Priori. Proceed to Rome. Upon arrival to Rome, end of the tour.

Exciting Highlights Day by Day

- Assisi: View of the Churches of St. Francis and St. Claire
- Florence: Visit of the Accademia, home of Michelangelo's "David"
- Padua: See Donatello's masterpiece, the "Gattamelata"
- Venice: Visit the famous square of St. Mark and the Bridge of Sighs
- Milan: See the Duomo, the world famous cathedral
- Bologna: Discover the artistic treasures around Piazza Maggiore
- San Marino: Visit the world's smallest independent republic
- Perugia: View the impressive Palazzo dei Priori and the Cathedral

Scenic Drives Along the Way

- The beautiful Autostrada del Sole
- The Tuscan countryside through medieval towns
- The lovely Emilia Romagna region
- The Veneto region, world famous for its Villa of Palladio
- The Italian Alps

Unbeatable Features

- Accommodation at 4 Star hotels with down-town location
- Buffet breakfast daily (no eggs)
- Six dinners
- Service charges and taxes included
- Ground transportation by deluxe motor coach
- Our guide will assist you during the tour
- Sightseeing tours as indicated in the itinerary
- Local guides and entrance fees

NOTE: TOUR AVAILABLE FROM MARCH TO NOVEMBER - TUESDAY DEPARTURE

Jolly Sicily

JOLLY SICILY TOUR JOLLY

US \$1,599

PRICE PER PERSON BASED ON A DOUBLE OCCUPANCY

**JOLLY SICILY TOUR (8 DAYS/7 NIGHT) 4 STAR HOTELS:
PALERMO – CEFALÙ – MESSINA – TAORMINA – SYRACUSE
– AGRIGENTO – ERICE. FROM APRIL TO OCTOBER – SATURDAY
DEPARTURE.**

Day 1 Saturday Palermo

Independent arrival at the Jolly Hotel Palermo. Enjoy a welcome cocktail. Dinner and overnight in hotel.

Day 2 Sunday Palermo – Cefalù' – Capo d'Orlando – Reggio Calabria – Messina

After a buffet breakfast, drive along the Thyrrenian coast. Stop in Cefalù, a pleasant resort well known for its beautiful Norman Cathedral and medieval wash-house built in the rock. Proceed to Capo d'Orlando for lunch. Continue to Messina. Sea conditions permitting, embark to Reggio Calabria and visit the famous "Bronzi di Riace". Return to Messina. Dinner and overnight at the Jolly Hotel Messina.

Day 3 Monday Messina – Mount Etna – Taormina – Messina

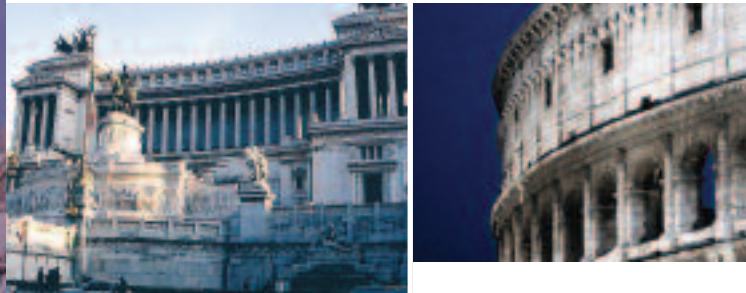
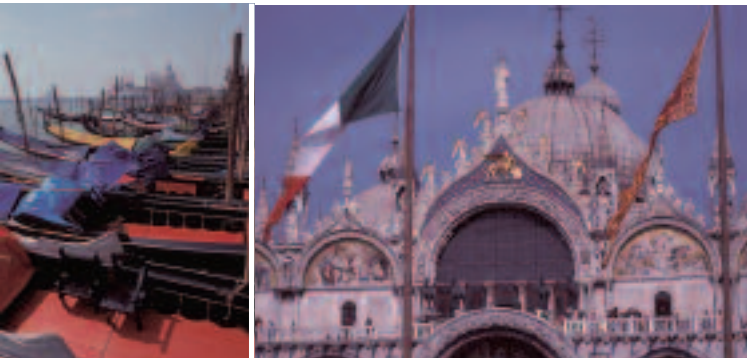
After a buffet breakfast, conditions permitting, excursion until 1800 meters, to Mount Etna the highest active volcano of Europe. Continue to Taormina: lunch at a local restaurant. In the afternoon, visit the Greek Theater and enjoy time at leisure for shopping or walking through the tiny streets. Return to Messina: dinner and overnight at the Jolly Hotel.

Day 4 Tuesday Messina – Catania – Syracuse

After a buffet breakfast, depart to Syracuse. Panoramic tour of Catania. Lunch at Jolly Hotel Syracuse. In the afternoon, visit of the archaeological area including the famous Latomie of the Paradise and the Dionysios "Ear" as well as visit of the island of Ortigia, singular treasure of the Baroque style. Dinner and overnight accommodation at the Jolly Hotel in Syracuse.

Day 5 Wednesday Syracuse – Piazza Armerina – Agrigento

After a buffet breakfast, depart for Piazza Armerina and visit the worldwide famous Villa Romana del Casale famed for its well preserved mosaics. Lunch in a typical restaurant and continue to





AGRIGENTO. VISIT THE VALLEY INCLUDING THE TEMPLE OF JUNO, CONCORD, HERACLES, ZEUS, CASTOR AND POLLUX. DINNER AT THE JOLLY HOTEL DELLA VALLE. AFTER DINNER ENJOY AN UNFORGETTABLE PANORAMIC TOUR OF THE VALLEY OF THE TEMPLES ILLUMINATED. OVERNIGHT IN AGRIGENTO.

Day 6 Thursday Agrigento – Segesta – Erice – Trapani – Palermo

AFTER A BUFFET BREAKFAST, DEPART FOR SEGESTA TO VISIT THE DORIC TEMPLE WHICH KEEPS IN ITS STONE THE WEIGHT OF A LONG HISTORY, SURROUNDED BY A UNIQUE LANDSCAPE. LUNCH AT A LOCAL RESTAURANT IN ERICE, A MEDIEVAL TOWN FULL OF MYTH AND HISTORY, ART AND ENVIRONMENT LOCATED AT 800 METERS ABOVE THE SEA. AFTER LUNCH ENJOY AN ORIENTATION TOUR OF TRAPANI'S SALT MILLS. CONTINUE TO PALERMO. DINNER AND OVERNIGHT AT JOLLY HOTEL PALERMO OR SIMILAR.

Day 7 Friday Palermo – Monreale

AFTER A BUFFET BREAKFAST DEPART TO MONREALE WITH VISIT TO THE "DUOMO" (CATHEDRAL) WHICH IS ONE OF THE MOST RENOWNED MONUMENTS IN THE WORLD AS WELL AS THE BENEDICTINE CLOISTER, IN PURE NORMAN STYLE. VISIT THE CITY OF PALERMO INCLUDING THE CATHEDRAL, THE PALATINE CHAPEL IN THE ROYAL PALACE, AS WELL AS A PANORAMIC TOUR OF THE HISTORICAL CENTER. LUNCH AT JOLLY HOTEL. IN THE AFTERNOON, ENJOY THE POSSIBILITY TO VISIT PART OF PALERMO BY YOUR OWN OR TO PARTICIPATE TO AN OPTIONAL EXCURSION TO THE CATACOMBS, THE "CAPO" MARKET AND MONDELLO. FAREWELL DINNER AND ACCOMMODATION AT THE JOLLY HOTEL OR SIMILAR.

Day 8 Saturday Palermo

AFTER A BUFFET BREAKFAST, END OF YOUR TOUR.

UNBEATABLE FEATURES

- ACCOMMODATION AT 4 STAR JOLLY HOTELS
- SEVEN DINNERS AND FIVE LUNCHES
- SERVICE CHARGES AND TAXES INCLUDED
- GROUND TRANSPORTATION BY DELUXE MOTOR COACH
- SIGHTSEEING TOURS AS INDICATED IN THE ITINERARY WITH ENGLISH SPEAKING DRIVER

Excursions in Rome

- ENTRANCE FEES ARE NOT INCLUDED.
- ENGLISH SPEAKING TOUR LEADER AND GUIDE GUARANTEED.
- PLEASE ASK FOR OTHER LANGUAGES

NOTE: ENTRANCE FEES ARE NOT INCLUDED

PAPAL BLESSING IN CASTELGANDOLFO

US \$69

PAPAL BLESSING (SUNDAY MORNINGS IN ROME)

SUMMER – VILLA BORGHESE – AURELIAN WALLS – VIA VENETO – REPUBLIC SQUARE – PIAZZA VENEZIA – COLOSSEUM – CARACALLA – THE APPIAN WAY – ALBANO LAKE (STOP) – CASTELGANDOLFO – PAPAL BLESSING.

DEPARTURE: 09.00 A.M. – AFTER THE CEREMONY RETURN TO ROME. CLIENTS WILL BE RETURNED TO THEIR HOTELS OR IN THE IMMEDIATE VICINITY.

ROMAN COUNTRYSIDE

US \$69

ALBANO – CASTELGANDOLFO, THE SUMMER RESIDENCE OF THE POPE – ARICCIA – GENZANO – NEMI – GROTTAFERRATA – FRASCATI.

DEPARTURE: 14.30 (EVERY AFTERNOON, SATURDAY & TUESDAY)

NOTE: CLIENTS WILL BE ACCOMPANIED BACK TO THEIR HOTELS OR IN THE IMMEDIATE VICINITY.

ROME POST TOUR

US \$949

PRICE PER PERSON BASED ON A DOUBLE OCCUPANCY

ROME, NAPLES, POMPEII, SORRENTO, CAPRI, ROME.

Day 1 PICK UP AT THE AIRPORT – DROP OFF AT THE HOTEL, AFTER THE END OF THE ESCORTED TOUR IN ROME. OVERNIGHT (ROME)

Day 2 BREAKFAST AT THE HOTEL. IN THE MORNING COMPLIMENTARY PICK UP FROM THE HOTEL AND DEPARTURE TO NAPLES. ORIENTATE TOUR THEN CONTINUE TO POMPEII. LUNCH AND GUIDED VISIT TO THE EXCAVATIONS; AFTER POMPEII CONTINUE TO SORRENTO. DINNER AND OVERNIGHT IN A 4 STARS HOTEL. (SORRENTO)

Day 3 BREAKFAST AT THE HOTEL. DAY AT LEISURE. DINNER AND OVERNIGHT. (SORRENTO)

Day 4 BREAKFAST AT THE HOTEL. TRANSFER TO THE PORT. FERRY BOAT RIDE TO CAPRI AND VISIT OF THE ISLAND. LUNCH. IN THE AFTERNOON RETURN TO SORRENTO

AND DEPARTURE TO ROME. DROP OFF AT THE HOTEL IN ROME. OVERNIGHT. (ROME)

Day 5 BREAKFAST AT THE HOTEL. TRANSFER TO THE AIRPORT



ROME PRE & POST TOUR

US \$799

PRICE PER PERSON BASED ON A DOUBLE OCCUPANCY

Day 1 TRANSFER FROM AIRPORT TO HOTEL. OVERNIGHT

Day 2 BREAKFAST AT THE HOTEL. IN THE MORNING COMPLIMENTARY PICK UP FROM THE HOTEL FOR THE HALF DAY TOUR VATICAN MUSEUMS. AFTERNOON AT LEISURE. OVERNIGHT. (ROME)

Day 3 BREAKFAST AT THE HOTEL. IN THE MORNING COMPLIMENTARY PICK UP FROM THE HOTEL FOR THE HALF DAY TOUR MONUMENTS OF ROME. AFTERNOON AT LEISURE. OVERNIGHT.

Day 4 BREAKFAST AT THE HOTEL. COMPLIMENTARY PICK UP TO THE DEPARTURE OF THE ESCORTED TOUR. AT THE END OF THE ESCORTED TOUR DROP OFF AT THE HOTEL. OVERNIGHT. (ROME) LAST DAY BREAKFAST AT THE HOTEL. TRANSFER TO THE AIRPORT.

ROME TO ASSISI AND ORVIETO

US \$169

AN OPPORTUNITY TO VISIT THE UMBRIA REGION. THE ROUTE IS DOTTED WITH CHARMING MEDIEVAL TOWNS SUCH AS SPOLETO, TREVÌ, FOLIGNO, SPELLO AND ASSISI. VISIT TO ST. FRANCIS BASILICA AND THE BASILICA OF ST. MARIA DEGLI ANGELI.

ENJOY A PLEASANT LUNCH IN A RESTAURANT WITH A TYPICAL UMBRIAN MENU.

FROM 01.04.04 TO 31.10.04: MONDAYS, THURSDAY AND SATURDAYS.

ROME TO FLORENCE FULL DAY EXCURSION

US \$249

LEAVE ROME ALONG THE AUTOSTRADA DEL SOLE THROUGH THE BEAUTIFUL COUNTRYSIDE OF LATIUM, UMBRIA AND TUSCANY TO FLORENCE. GUIDED TOUR OF THE CITY INCLUDING THE CATHEDRAL OF SANTA MARIA DEL FIORE, GIOTTO'S BELL TOWER AND BAPTISTRY AND THE ACADEMY OF FINE ARTS WITH THE STATUE OF DAVID BY MICHELANGELO, SIGNORIA'S SQUARE AND PALACE.

LUNCH IN A TYPICAL RESTAURANT. TIME AT LEISURE FOR SHOPPING. BEFORE LEAVING FLORENCE, DRIVE TO THE PANORAMIC TERRACE OF PIAZZALE MICHELANGELO, FOR A LAST VIEW OF THE RENAISSANCE CITY, INCLUDING PONTE VECCHIO.

FROM 01.04.04 TO 15.11.04: DAILY DEPARTURES (EXCEPT MONDAY).
RETURN TO ROME AT APPROX. 9:00 PM.

ROME TO NAPLES AND CAPRI

US \$249

LEAVE ROME ALONG THE AUTOSTRADA DEL SOLE ACROSS THE ROMAN COUNTRYSIDE TO NAPLES AND DEPART BY STEAMER TO CAPRI. UPON ARRIVAL AT MARINA GRANDE, WEATHER PERMITTING, VISIT OF THE BLUE GROTTA. RETURN TO MARINA GRANDE AND DEPART BY MINIBUS FOR A PANORAMIC TOUR OF THE ISLAND ENDING AT ANACAPRI. LUNCH IN A LOCAL RESTAURANT.

RETURN TO ROME AT APPROX. 09:00 PM.

ROME TO NAPLES AND POMPEII

US \$199

LEAVE ROME ALONG THE AUTOSTRADA DEL SOLE ACROSS THE ROMAN COUNTRYSIDE TO NAPLES FOR AN ORIENTATION TOUR OF THE CITY, INCLUDING MERGELLINA, LUNGOMARE CARACCIOLLO, THE ROYAL PALACE, THE SAN CARLO THEATRE AND THE HARBOUR. CONTINUE TO POMPEII, WHERE AFTER LUNCH IN A LOCAL RESTAURANT, THERE WILL BE A VISIT OF THE VERY WELL PRESERVED RUINS OF THE ANCIENT ROMAN CITY BURIED BY THE ERUPTION OF MT. VESUVIUS IN 79 A.D.

RETURN TO ROME AT APPROX. 09:00 PM.

Excursions in Florence

ROME TO FLORENCE FULL DAY EXCURSION

US \$249

LEAVE ROME ALONG THE AUTOSTRADA DEL SOLE THROUGH THE BEAUTIFUL COUNTRYSIDE OF LATIUM, UMBRIA AND TUSCANY TO FLORENCE. GUIDED TOUR OF THE CITY INCLUDING THE CATHEDRAL OF SANTA MARIA DEL FIORE, GIOTTO'S BELL TOWER AND BAPTISTRY AND THE ACADEMY OF FINE ARTS WITH THE STATUE OF DAVID BY MICHELANGELO, SIGNORIA'S SQUARE AND PALACE.

LUNCH IN A TYPICAL RESTAURANT. TIME AT LEISURE FOR SHOPPING. BEFORE LEAVING FLORENCE, DRIVE TO THE PANORAMIC TERRACE OF PIAZZALE MICHELANGELO, FOR A LAST VIEW OF THE RENAISSANCE CITY, INCLUDING PONTE VECCHIO.

FROM 01.04.04 TO 15.11.04: DAILY DEPARTURES (EXCEPT MONDAY).
RETURN TO ROME AT APPROX. 9:00 PM.



VISIT OF FLORENCE (AFTERNOON)

US \$89

FIRST YOU WILL START TO VISIT THE SOUTH OF FLORENCE, HIS PIAZZA DELLA SIGNORIA, LONG THE CITY'S POLITICAL HEART, FLANKED BY THE PALAZZO VECCHIO, FLORENCE TOWN HALL AND THE UFFIZI GALLERY (VISIT) ON OF ITALY'S LEADING ART GALLERIES. THEN TO THE EAST, LIES THE CHURCH OF THE SANTA CROCE (VISIT) HOME TO FRESCOES BY GIOTTO AND TOMBS OF SOME OF FLORENCE'S GREATEST MEN: MICHELANGELO, MACHIAVELLI, GALILEO AND ROSSINI.

GALLERY OF THE ACADEMY (VISIT)*: THE ORIGINAL DAVID BY MICHELANGELO AND OTHER MASTERPIECES.

*SHOULD THE GALLERY BE CLOSED, A VISIT TO THE ARCHAEOLOGICAL SITE OF THE ROMAN THEATRE OF FIESOLE AND PIAZZA DELLA SIGNORIA, WILL TAKE PLACE, AS ALTERNATIVE. THE GALLERY IS CLOSED



VISIT OF FLORENCE (MORNING)

US \$89

VIALE DEI COLLI – PIAZZALE MICHELANGELO (STOP) – PALAZZO PITTI (VISIT)* – PALATINE GALLERY: BOTTICELLI.

RAPHAEL, TITIAN, RUBENS, MURILLO, VELASQUEZ ETC. – BOBOLI GARDENS (VIEW) – THE CATHEDRAL (VISIT): BRUNELLESCHI'S GRANDIOSE CUPOLA** GIOTTO'S BELL TOWER, THE BAPTISTRY: GATES OF PARADISE.

* PALAZZO PITTI: CLOSED ON MONDAY. REPLACED WITH THE BARGELLO MUSEUM OR THE MEDICI CHAPELS.

** CATHEDRAL: CANNOT BE VISITED ON SUNDAYS, NATIONAL HOLIDAYS AND FOR REASON BEYOND CONTROL.

NEW!!! You can now book all of our passes, tours & excursions at the last minute. Simply go to museumpass.com, book and print your travel voucher. It will be accepted at our conveniently located redeeming location within Rome, Florence, Milan & Venice.

Excursions in Venice

VENICE HISTORICAL CENTER ON FOOT (EVERY MORNING)

US \$60

VENICE IS THE ONLY CITY OF ITS KIND IN THE WORLD BECAUSE OF THE WAY IT WAS DEVELOPED: IT WAS BUILT ON OVER 100 ISLANDS IN A LAGOON FOUR KILOMETERS FROM TERRA FIRMA AND TWO KILOMETERS FROM THE ADRIATIC SEA.

VISITS: THE RICHES OF ST. MARK'S SQUARE ALONE BEAR WITNESS TO VENICE'S POSITION AS A WORLD POWER FROM THE 12TH TO 14TH CENTURIES. THE DOGE' PALACE WAS THE OFFICIAL RESIDENCE OF EACH VENETIAN RULER (DOGE) AND WAS FOUNDED IN THE 19TH CENTURY. THE PRESENT PALACE OWES ITS ETERNAL APPEARANCE TO THE BUILDING WORK OF THE 14TH AND EARLY 15TH CENTURIES. THE ENTIRE HISTORIC CENTER, CRISSCROSSED BY CANALS CONNECTED BY HUNDREDS OF BRIDGES, IS A TREASURE FROM THE ARTISTIC AND ARCHITECTURAL POINT OF VIEW. THE RIALTO BRIDGE, IS ON OF VENICE'S MOST FAMOUS SIGHTS THE BRIDGE OFFERS WONDERFUL PLACE TO WATCH AND PHOTOGRAPH THE CONSTANT ACTIVITY OF BOATS ON THE GRAND CANAL. THE BRIDGE OF SIGHS (1600) WAS BUILT AS PASSAGE WAY BETWEEN THE PALAZZO DUCALE AND THE PRISON. IT REPUTEDLY TOOK ITS NAME FROM THE SIGHS OF PRISONERS BEING LED TO TRIAL .

DEPARTURE FROM AMERICAN EXPRESS' OFFICE IN ST. MARK SQUARE (NEAR HOTEL BAUER).

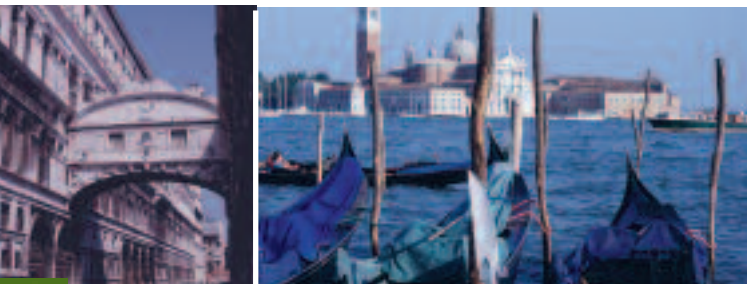
VENICE TOUR (EVERY AFTERNOON)

US \$39

VENICE TOUR OF MURANO, BURANO AND TORCELLO

MOTOR LAUNCH RIDE FROM VENICE INTO OPEN LAGOON TO MURANO. IT HAS BEEN THE CENTER OF THE GLASSMAKING INDUSTRY SINCE 1291. VISIT OF A GLASS FACTORY. THEN ON TO BURANO AND TORCELLO THE MOST COLORFUL LAGOON OF THE ISLANDS WHERE YOU WILL VISIT TWO ARCHITECTURAL MASTERPIECES CLOSELY LINKED WITH THE LIFE AND ASPIRATIONS OF THE FIRST LAGOON SETTLERS.

DEPARTURE FROM SERENISSIMA MOTOSCAFI (NEAR HOTEL DANIELI).



Paris in short

PARIS IN SHORT

STARTING AT US \$499

THIS PACKAGE IS DESIGNED FOR PEOPLE WHO HAVE A VERY LIMITED TIME IN PARIS. IT INCLUDES:

- 3 NIGHT ACCOMMODATION AT A HOTEL TO BE SELECTED WITH DAILY BREAKFAST.
- ROUND-TRIP TRANSFER BETWEEN AIRPORT AND HOTEL.
- HALF-DAY CITY TOUR OF PARIS
- 2 DAY PARIS MUSEUM PASS
- 3 DAY PASS ALLOWING UNLIMITED TRAVEL BY SUBWAY AND BUS THROUGHOUT PARIS. (NO WAITING ON LINES)
- 10 % DISCOUNT CARDS TO THE MOST FAMOUS GALERIES LAFAYETTE DEPARTMENT STORES



PRICES PER PERSON IN DOUBLE OCCUPANCY START AT \$499 IN A 2 STAR HOTEL, \$699 IN A 3 STAR HOTEL AND \$899 IN A 4 STAR HOTEL. INQUIRE WITH US FOR DETAILS.

PRICES ARE PER PERSON. AIR FARES ARE NOT INCLUDED BUT CAN BE ARRANGE THROUGH OUR AGENCY.

NEW!!!: YOU CAN NOW BOOK ALL OF OUR PASSES, TOURS & EXCURSIONS AT THE LAST MINUTE. SIMPLY GO TO FRENCHEXPERIENCE.COM, BOOK AND PRINT YOUR TRAVEL VOUCHER. IT WILL BE ACCEPTED AT OUR CONVENIENTLY LOCATED REDEEMING LOCATION WITHIN ROME, FLORENCE, MILAN & VENICE.

London in short

HISTORIC & MODERN LONDON WITH A PUB LUNCH & THAMES CRUISE

HIGHLIGHTS

- VISIT WESTMINSTER ABBEY
- SEE CHANGING OF THE GUARD
- PHOTO STOPS AT ST PAUL'S CATHEDRAL AND BUCKINGHAM PALACE
- VISIT THE TOWER OF LONDON
- SEE THE FAMOUS CROWN JEWELS
- ENGLISH PUB LUNCH
- RIVER CRUISE
- ALL ENTRANCES INCLUDED

ALL THE MAIN INGREDIENTS THAT MAKE LONDON UNIQUE, SUCH AS OUR HISTORICAL BUILDINGS, OUR ROYAL SPLENDOR, OUR FRIENDLY SAFE ENVIRONMENT, AND OUR WARM WELCOME TO YOU ALL.

WESTMINSTER ABBEY

COME WITH US TO SEE THE FAMOUS ROYAL CHAPELS, WHERE ENGLISH MONARCHS HAVE BEEN BURIED SINCE SAXON TIMES! THE ABBEY IS OUR MOST IMPORTANT CHURCH AND HAS BEEN THE SITE OF ALMOST EVERY CORONATION SINCE 1066. LAST SEEN BY MILLIONS WORLD-WIDE AT THE FUNERALS OF DIANA, PRINCESS OF WALES AND QUEEN ELIZABETH, THE QUEEN MOTHER, IT IS HERE THAT WE HOLD MOST OF OUR IMPORTANT STATE, ROYAL AND RELIGIOUS CEREMONIES AND CELEBRATIONS. WHEN SERVICES PROHIBIT A VISIT INSIDE THE ABBEY WE WILL VISIT THE CHAPTER HOUSE INSTEAD.

CHANGING OF THE GUARD AT BUCKINGHAM PALACE

WE ALIGHT NEAR THE MALL, AND EITHER GO TO THE LONDON RESIDENCE OF HER MAJESTY THE QUEEN, BUCKINGHAM PALACE, TO SEE THE CHANGING OF THE FOOT GUARD, OR TO HORSEGUARDS PARADE, TO SEE THE CHANGING OF THE HOUSEHOLD CAVALRY. BOTH ARE WONDERFUL, COLORFUL SPECTACLES AND PHOTOGRAPHER'S PARADISE!

(MON-FRI)



Terms & conditions

GENERAL CONDITIONS FOR ALL TOURS (BUS-MINIBUS-PRIVATE CARS) EXCURSIONS – SIGHTSEEING – HOTELS – AIR RESERVATIONS - PASSES-VOUCHERS-SERVICES

PLEASE READ THE BOOKING CONDITIONS CAREFULLY AS THEY INCORPORATE THE BASIS ON WHICH BOOKINGS ARE ACCEPTED.

1. PRODUCT VALIDITY

TOURS AND EXCURSIONS ARE VALID AS PER THE DATES DISPLAYED ON THE ONLINE CATALOGUE PAGES OF THE WWW.TOURPACKAGERS.COM WEB SITE. ALL PRICES ON THIS BROCHURE ARE SUBJECT TO AVAILABILITY AT THE TIME OF BOOKING, AND ARE SUBJECT TO CHANGE AT ANY MOMENTS NOTICE. CUSTOMERS ARE ENCOURAGED TO CHECK THE LATEST PRICES ON OUR ONLINE CATALOG AT WWW.TOURPACKAGERS.COM.

PASSES AND TICKETS ARE VALID FROM THE DATE OF FIRST USE. ALL DURATIONS NOTED IN THE PASSES ARE CONSECUTIVE DAYS (UNLESS NOTED IN THE PASS' DESCRIPTION). YOU HAVE THE FREEDOM TO CHOOSE WHEN TO ACTIVATE YOUR PASS, BUT ONCE YOU DO, YOU HAVE CONSECUTIVE DAYS FROM THAT POINT. NOTE: A DAY IS COMPLETE AT 11:59 PM ON ANY DAY. THEREFORE, DON'T START USING A PASS LATE AT NIGHT UNLESS YOU CAN AFFORD TO GIVE UP THAT DAY.

2. PAYMENT

CREDIT CARDS ACCEPTED: MASTERCARD, VISA, AMERICAN EXPRESS, DISCOVER.

FULL PAYMENT BY CREDIT CARD IS REQUIRED TO MAKE A RESERVATION.

PAYMENT WILL BE LISTED AS EUROQUEST ON THE CREDIT CARD STATEMENT. ALL ORDERS WILL BE SUBJECT TO A NON-REFUNDABLE PER ORDER HANDLING/PROCESSING FEE TO COVER FOR THE SEVERAL REDEMPTION POINTS WE HAVE SET UP IN ALL THE COUNTRIES WE OPERATE FROM.

3. CORRECT SPELLING OF NAMES, TITLES

ALL NAMES, TITLES AND INITIALS OF THOSE TRAVELING SHOULD BE CORRECTLY GIVEN AT THE TIME OF BOOKING. CHANGES CANNOT BE MADE AT A LATER DATE.

4. MODIFICATIONS/AMENDMENTS

ALL REQUESTS FOR MODIFICATIONS/AMENDMENTS MUST BE DIRECTED TO THE EUROQUEST CUSTOMER SERVICE DEPARTMENT WHO WILL IMPLEMENT THE REQUEST. THE FIRST TWO REQUESTS WILL NOT ATTRACT A FEE; SUBSEQUENT REQUESTS WILL ATTRACT A FEE OF 25.00 PER BOOKING. THE AMENDMENT FEE WILL BE CHARGED IN THE SAME CURRENCY AS THE BOOKING TRANSACTION.

5. REFUNDS

5.1. PRIOR TO DEPARTURE

PLEASE REFER TO THE CANCELLATION FEES LISTED AT SECTION 6 BELOW.

5.2. AFTER DEPARTURE

NO REFUNDS ARE AVAILABLE ONCE A TOUR IS COMMENCED OR IN RESPECT OF ANY TOUR, EXCURSION, PASS, TICKET, PACKAGE, ACCOMMODATION, MEALS OR ANY OTHER SERVICES UTILIZED.

6. CANCELLATION CHARGES

CANCELING A PURCHASE WITH EUROQUEST WILL RESULT IN CANCELLATION FEES BEING APPLIED. EUROQUEST WILL CHARGE CANCELLATION FEES AS STATED BELOW IN SECTIONS 6.1 TO 6.5. ADDITIONAL FEES MAY BE LEVIED BY THE INDIVIDUAL SUPPLIER/OPERATOR ABOVE AND BEYOND THE FEES OUTLINED BELOW. WHEN CANCELING THE BOOKING YOU WILL BE NOTIFIED VIA EMAIL, FACSIMILE OR TELEPHONE OF THE TOTAL CANCELLATION FEES.

6.1. PACKAGES (INCLUDING ACCOMMODATION)

6.1.1 GREATER THAN 45 DAYS OF DEPARTURE, 10% OF THE TOTAL PACKAGE PRICE.

6.1.2 WITHIN 45 TO 30 DAYS OF DEPARTURE, 20% OF THE TOTAL PACKAGE PRICE.

6.1.3 WITHIN 29 TO 14 DAYS OF DEPARTURE, 30% OF THE TOTAL PACKAGE PRICE.

6.1.4 WITHIN 13 TO 8 DAYS OF DEPARTURE, 50% OF THE TOTAL PACKAGE PRICE.

6.1.5 WITHIN 7 TO 0 DAYS OF DEPARTURE, 100% OF THE TOTAL PACKAGE PRICE. (INCLUDED EVENT AND ATTRACTION TICKETS ATTRACT A FEE OF 100% AT ANY TIME AS PER SECTION 6.4)

6.1.6 (IF A PACKAGE BOOKING IS DURING A SPECIAL EVENT PERIOD [INCLUDING BUT NOT LIMITED TO TRADE FAIRS, PUBLIC OR NATIONAL HOLIDAYS, SCHOOL HOLIDAYS, NEW YEAR, THANKSGIVING, CHRISTMAS, EASTER], ANY CANCELLATION WILL ATTRACT A FEE EQUAL TO 100% OF THE TOTAL PACKAGE PRICE).

6.2. SHORT DURATION TOURS (DURATION = 1 FULL DAY OR LESS)

6.2.1 GREATER THAN 6 DAYS OF DEPARTURE, 10% OF THE TOTAL TOUR PRICE.

6.2.2 WITHIN 5 TO 3 DAYS OF DEPARTURE, 50% OF THE TOTAL TOUR PRICE.

6.2.3 WITHIN 2 TO 0 DAYS OF DEPARTURE, 100% OF THE TOTAL TOUR PRICE. (INCLUDED EVENT AND ATTRACTION TICKETS ATTRACT A FEE EQUAL TO 100% AT ANY TIME AS PER SECTION 6.4).

6.3. EXTENDED DURATION TOURS/CRUISES/RAIL TOURS (DURATION = 1 OR MORE OVERNIGHT STAYS):

6.3.1 GREATER THAN 45 DAYS OF DEPARTURE, 10% OF THE TOTAL TOUR PRICE.

6.3.2 WITHIN 45 TO 30 DAYS OF DEPARTURE, 20% OF THE TOTAL TOUR PRICE.

6.3.3 WITHIN 29 TO 14 DAYS OF DEPARTURE, 30% OF THE TOTAL TOUR PRICE.

6.3.4 WITHIN 13 TO 8 DAYS OF DEPARTURE, 50% OF THE TOTAL TOUR PRICE.

6.3.5 WITHIN 7 TO 0 DAYS OF DEPARTURE, 100% OF THE TOTAL TOUR PRICE. (INCLUDED EVENT AND ATTRACTION TICKETS ATTRACT A FEE EQUAL TO 100% AT ANY TIME AS PER SECTION 6.4).

6.4. EVENTS AND ATTRACTIONS

6.4.1 ANY CANCELLATION ON EVENT, ATTRACTION TICKETS/PASSES, TOURS AND EXCURSIONS ATTRACT A FEE EQUAL TO 100%.

6.5. TRANSFERS

6.5.1 ANY CANCELLATIONS ON TRANSFER BOOKINGS ATTRACT A FEE EQUAL TO 100%.

6.6. PASSES (MUSEUM – CITY – METRO – BUS – ATTRACTIONS)

6.6.1 PASSES ARE NON-REFUNDABLE – NON EXCHANGEABLE. PASSES AND PRODUCTS ARE NOT REPLACEABLE IF LOST OR STOLEN. IF THE PASS INSURANCE WAS PURCHASED AT CHECK OUT, THEN THE FOLLOWING CONDITIONS WILL APPLY: ALL REFUNDS OR EXCHANGES WILL BE SUBJECT TO A 25% RESTOCKING FEE. HANDLING, SHIPPING – CREDIT CARD PROCESSING AND OVERNIGHT FEES ARE NOT REFUNDABLE. ALL INTERNATIONAL ORDERS (CURRENCIES OTHER THAN US\$) WILL BE REFUNDED ACCORDING TO OUR POLICIES AND BASED ON THE US\$ AMOUNT COLLECTED AT THE TIME OF PURCHASE. EUROQUEST DBA MUSEUMPASS.COM AND IT'S AFFILIATES WILL NOT BE RESPONSIBLE FOR THE DIFFERENCES IN EXCHANGE RATE THAT MAY OCCUR AT THE TIME OF REFUND BETWEEN THE US\$ AND OTHER FOREIGN CURRENCIES. IF YOU PURCHASED OUR INSURANCE AT THE TIME OF BOOKING – PURCHASE AND WOULD LIKE TO OBTAIN YOUR REFUND OR EXCHANGE PASSES, PLEASE SEND VIA REGISTERED MAIL YOUR EMAIL RECEIPT, A LETTER EXPLAINING THE REASON OF YOUR REFUND OR EXCHANGE – YOUR ORIGINAL UNUSED- UNTOUCHED AND UNMARKED PASSES TO THE FOLLOWING ADDRESS:

MAIL SHOULD BE ADDRESSED TO:

PMSI
ATTN: EUROQUEST
12 COMMERCE STREET
SPRINGFIELD, NJ 07081-2996



7. PASSPORTS/VISAS

IT IS THE RESPONSIBILITY OF ALL PASSENGERS, REGARDLESS OF THE PASSPORT THEY HOLD, TO CHECK WITH THE APPROPRIATE CONSULATES TO DETERMINE IF ANY VISAS ARE REQUIRED. AS VISA AND HEALTH REQUIREMENTS ARE SUBJECT TO CHANGE WITHOUT NOTICE, IT IS RECOMMENDED THAT VERIFICATION PRIOR TO TRAVEL BE MADE OF EXISTING FOREIGN VISA AND HEALTH REQUIREMENTS.

8. PRICES

PRICES ARE PER PERSON, UNLESS OTHERWISE SPECIFIED. PRICES ARE BASED ON THE LOCAL TARIFFS AT THE TIME OF QUOTING CONVERTED AT THE PREVAILING FOREIGN EXCHANGE RATE. PRICE QUOTATIONS ARE SUBJECT TO CHANGE WITHOUT NOTICE UNTIL A BOOKING HAS BEEN CONFIRMED. CUSTOMERS ARE ENCOURAGED TO CHECK THE LATEST PRICES ON OUR ONLINE CATALOG AT WWW.MUSEUMPASS.COM.

9. NOT INCLUDED

ANY APPLICABLE FOREIGN DEPARTURE, SECURITY, PORT CHARGES, PARK FEES, CUSTOMS, IMMIGRATION, AGRICULTURAL, PASSENGER FACILITY CHARGES AND INTERNATIONAL TRANSPORTATION TAX.

TIPS/GRATUITIES TO TOUR DIRECTORS, DRIVERS, AND LOCAL GUIDES; PASSPORTS; VISA; BAGGAGE AND PERSONAL INSURANCE; BEVERAGES AND FOOD NOT LISTED UNDER INCLUSIONS IN THE TRAVEL PRODUCT (THESE ITEMS ARE BILLED TO YOU BEFORE LEAVING THE HOTEL/RESTAURANT); AND ALL OTHER ITEMS OF A PERSONAL NATURE.

10. ACCURACY

WE CHECK AND RECHECK FACTS ABOUT THE TRAVEL PRODUCT OFFERED TO ENSURE ACCURACY. WHEN WE ARE TOLD IN ADVANCE OF A SIGNIFICANT CHANGE TO A BOOKING, WE NOTIFY THE CONSUMER/TRAVEL AGENT/DISTRIBUTOR. THE LATEST PRICES ARE LISTED ON OUR WEB SITE AT WWW.FRENCHEXPERIENCE.COM

11. ACCOMMODATION

THOSE HOTELS LISTED WILL BE USED ON MOST TOURS AND PACKAGES. IF A CHANGE IS MADE FOR ANY REASON, EVERY EFFORT WILL BE MADE TO ENSURE HOTELS USED WILL BE THE EQUIVALENT OF THOSE SHOWN. PLEASE NOTE THAT IT IS STANDARD POLICY THAT HOTEL ROOMS ARE NOT AVAILABLE FOR CHECK-IN BEFORE 2.00PM ON THE DATE OF ARRIVAL.

12. TRAVEL INSURANCE

WE STRONGLY RECOMMEND THAT, AT THE TIME OF THE BOOKING, A COMPREHENSIVE TRAVEL INSURANCE POLICY BE PURCHASED. ALL PASSES (MUSEUMS, BUS – METRO – ATTRACTIONS) CAN BE INSURED AGAINST NON-USAGE AT CHECK – OUT ONLY. PLEASE REFER TO THE CANCELLATION FEES LISTED AT SECTION 6.6.1. FOR ALL OTHER TOURS, EXCURSIONS, AIR HOTEL AND LAND ARRANGEMENTS, AN INTERNATIONAL TRAVEL INSURANCE CAN BE PURCHASED ONLINE AT WWW.TOURPACKAGERS.COM

13. BAGGAGE

DUE TO LIMITED SPACE ON MOTORCOACH TOURS, WE ASK TOUR MEMBERS TO CARRY ONE BAG PER PERSON ON EACH TOUR. WHEELED CARRY-ON BAGS ARE NOT SUITABLE AS HAND LUGGAGE ON

MOTORCOACHES.

14. TRAVEL VOUCHER(S)

A EUROQUEST VOUCHER WILL BE PROVIDED FOR EACH BOOKING SEGMENT – SERVICE PURCHASED. DEPENDING ON YOUR PURCHASE, THE ORIGINAL PASSES OR PRINTED ELECTRONIC TRAVEL VOUCHERS MUST BE PRESENTED FOR ADMISSION AT EACH ATTRACTION. ALL PASSES AND PRINTED ELECTRONIC VOUCHERS ARE GOOD FOR GENERAL ADMISSION DURING NORMAL OPERATING HOURS. EUROQUEST LLC AND IT'S AFFILIATES ARE NOT RESPONSIBLE FOR LOST, STOLEN OR DAMAGED CARDS OR VOUCHERS. THE RULE APPLIES IN THE EVENT OF CLOSURE OF PARTICIPATING LOCATIONS FOR PUBLIC HOLIDAYS OR UNFORESEEN EVENTS (STRIKES, ETC.). SOME BLACKOUT DATES MAY OCCUR. CONSUMERS UNDERSTANDS AND AGREES THAT THE PAYMENTS VIA CREDIT CARD OR THE MAILING OF THE FORM ACCOMPANIED A CHECK OR MONEY ORDER SHALL BE DECREED A BINDING ACCEPTANCE OF EUROQUEST LLC OFFER AND THAT ALL SALES ARE FINAL.

15. SHIPPABLE ITEMS(S)

YOU MAY REQUEST SOME OF OUR GENUINE PASSES OR TICKETS TO BE MAILED TO YOU INSTEAD OF PRINTING AN ELECTRONIC TRAVEL VOUCHER AND REDEEMING IT LATER. IN THAT CASE PLEASE NOTE THAT ALL SHIPPABLE ORDERS RECEIVED OVER THE WEEKEND OR DURING A HOLIDAY WILL BE PROCESSED THE NEXT BUSINESS DAY.

IMPORTANT: YOUR PACKAGE WILL BE DELIVERED AT THE ADDRESS INDICATED. A SIGNATURE WILL BE REQUIRED. EUROQUEST DBA MUSEUMPASS.COM AND IT'S AFFILIATES, WILL NOT BE HELD RESPONSIBLE FOR ANY PACKAGES LOST ONCE PROOF OF DELIVERY IS PROVIDED BY MAIL CARRIER.

CUSTOMER MAY SELECT AT THEIR OWN CHOICE AND WILL THAT PASSES BE SENT EXPRESS. FOR INTERNATIONAL DELIVERY OUTSIDE THE U.S.A., INCLUDING DELIVERIES TO CANADA, HAWAII, ALASKA, AND PUERTO RICO, YOU WILL HAVE TO SELECT THE NEXT BUSINESS DAY OPTION. SELECTING NEXT BUSINESS DAY DELIVERY FOR AN INTERNATIONAL SHIPPING WILL NOT BE DELIVERED OVERNIGHT BUT WILL COVER THE COST FOR INTERNATIONAL SHIPPING.

16. OUR RESPONSIBILITY

CUSTOMERS, ACKNOWLEDGE BY THEIR ACCEPTANCE, THAT EUROQUEST, ITS AGENTS AND SUPPLIERS, IN MAKING ARRANGEMENTS FOR HOTELS, TOURS, TRANSPORTATION OR ANY SERVICE IN CONNECTION WITH THE ITINERARIES OF INDIVIDUAL TRAVELERS SHALL NOT BE LIABLE FOR INJURY, DAMAGE, LOSS, ACCIDENT, DELAY OR IRREGULARITY, LIABILITY OR EXPENSE TO PERSON OR PROPERTY DUE TO ACT OF DEFAULT BY ANY HOTEL, CARRIER OR OTHER COMPANY OR PERSON PROVIDING SERVICES INCLUDED IN THE TOURS. FURTHER, EUROQUEST, ITS AGENTS AND SUPPLIERS ACCEPT NO RESPONSIBILITY FOR ANY SICKNESS, PILFERAGE, LABOR DISPUTES, STRIKES, MACHINERY BREAKDOWN, GOVERNMENT RESTRAINTS, ACTS OF WAR AND TERRORISM, WEATHER CONDITIONS, DEFECT IN ANY VEHICLE OF TRANSPORTATION OR FOR ANY MISADVENTURE OR CASUALTY OR ANY OTHER CAUSES BEYOND THEIR CONTROL. EUROQUEST RESERVES THE RIGHT TO CANCEL, CHANGE OR SUBSTITUTE ANY SERVICE AND TO DECLINE TO ACCEPT OR RETAIN ANY TRAVELERS AT ANY TIME FOR ANY REASON INCLUDING, WITHOUT LIMITATION, INSUFFICIENT NUMBER OF PARTICIPANTS.

THE SOLE RESPONSIBILITY OF ANY AIRLINE USED IN ANY TOUR IS LIMITED TO THAT SET OUT IN THE

PASSENGER CONTRACT EVIDENCED BY THE TICKET. ANY ARC OR IATA CARRIERS SHALL NOT BE LIABLE FOR ANY INCONVENIENCE, LOSS OR DAMAGE, INJURY, ACCIDENT, DELAY OR IRREGULARITY WHICH MAY BE OCCASIONED BY REASON OF DEFECT OR THROUGH THE ACTS OR OMISSIONS OF ANY PERSON OR COMPANY PERFORMING OR RENDERING THE SERVICES, RESPONSIBLE FOR ANY CHANGES OR INCREASED COSTS INCURRED BY PASSENGERS AS A RESULT OF THE CANCELLATION OF SERVICES DUE TO BE PROVIDED BY ITS AGENTS OR SUPPLIERS FOR ANY REASON INCLUDING, WITHOUT LIMITATION, INSUFFICIENT NUMBER OF PARTICIPANTS. ALL TRAVEL DOCUMENTS/VOUCHERS ARE ISSUED SUBJECT TO THE TERMS AND CONDITIONS SPECIFIED BY EUROQUEST, ITS AGENTS AND SUPPLIERS.

GENERAL

THIS AGREEMENT IS GOVERNED BY THE LAWS OF THE STATE OF NEW YORK, USA. YOU HEREBY CONSENT TO THE EXCLUSIVE JURISDICTION AND VENUE OF COURTS IN NEW YORK USA, IN ALL DISPUTES ARISING OUT OF OR RELATING TO THE USE OF THIS WEB SITE. USE OF THIS WEB SITE IS UNAUTHORIZED IN ANY JURISDICTION THAT DOES NOT GIVE EFFECT TO ALL PROVISIONS OF THESE TERMS AND CONDITIONS, INCLUDING, WITHOUT LIMITATION, THIS PARAGRAPH.

YOU AGREE THAT NO JOINT VENTURE, PARTNERSHIP, EMPLOYMENT, OR AGENCY RELATIONSHIP EXISTS BETWEEN YOU AND EUROQUEST, LLC. AS A RESULT OF THIS AGREEMENT OR USE OF THIS WEB SITE.

EUROQUEST, LLC.'S PERFORMANCE OF THIS AGREEMENT IS SUBJECT TO EXISTING LAWS AND LEGAL PROCESS, AND NOTHING CONTAINED IN THIS AGREEMENT IS IN DEROGATION OF EUROQUEST, LLC.'S RIGHT TO COMPLY WITH LAW ENFORCEMENT REQUESTS OR REQUIREMENTS RELATING TO YOUR USE OF THIS WEB SITE OR INFORMATION PROVIDED TO OR GATHERED BY EUROQUEST, LLC. WITH RESPECT TO SUCH USE.

IF ANY PART OF THIS AGREEMENT IS DETERMINED TO BE INVALID OR UNENFORCEABLE PURSUANT TO APPLICABLE LAW INCLUDING, BUT NOT LIMITED TO, THE WARRANTY DISCLAIMERS AND LIABILITY LIMITATIONS SET FORTH ABOVE, THEN THE INVALID OR UNENFORCEABLE PROVISION WILL BE DEEMED SUPERSEDED BY A VALID, ENFORCEABLE PROVISION THAT MOST CLOSELY MATCHES THE INTENT OF THE ORIGINAL PROVISION AND THE REMAINDER OF THE AGREEMENT SHALL CONTINUE IN EFFECT.

THIS AGREEMENT CONSTITUTES THE ENTIRE AGREEMENT BETWEEN THE CUSTOMER AND EUROQUEST, LLC. WITH RESPECT TO THIS WEB SITE AND IT SUPERSEDES ALL PRIOR OR CONTEMPORANEOUS COMMUNICATIONS AND PROPOSALS, WHETHER ELECTRONIC, ORAL, OR WRITTEN, BETWEEN THE CUSTOMER AND EUROQUEST, LLC. WITH RESPECT TO THIS WEB SITE.

ANY RIGHTS NOT EXPRESSLY GRANTED HEREIN ARE RESERVED.

COPYRIGHT AND TRADEMARK NOTICES

ALL CONTENTS OF THIS WEB SITE IS OWNED BY EUROQUEST LLC.
© 1993 – 2007 EUROQUEST, LLC. ALL RIGHTS RESERVED.